

15th Annual On-Property Sale

181 Lots



BRUCELLOSIS
FREE

Thursday November 7th 2019

Sale 1.30 pm | Inspection from 11.00am

SOUTHDOWN | WHITE SUFFOLK | POLL DORSET

F.H Badcock & Son
174 Station Lane, Hagley, TAS

FAIRBANK

PRIME LAMB SIREs

- SINCE 1903 -



Welcome to our 15th Annual On-Property Ram Sale

Prime lamb sires have been bred at Fairbank since the property was purchased by our family in 1903 and continue to be the major enterprise on the property. We aim to breed structurally superior rams that contain balanced ASBVs with Lambplan being utilised since its inception

Agents:



(4% rebate to outside agents)

Written introduction 24 hours
prior to sale applies.
Settlement within 7 days.

Roberts Ltd Contact: Warren Johnston - 0419 326 348
Jock Gibson - 0418 133 595
studstock@robertsltd.com.au

Fairbank Contacts: Frank Badcock - 0419 922 227
Chris Badcock - 0438 775 285

You have made a significant investment into your prime lamb enterprise so following these few steps will help ensure the longevity of your purchases.

- When new rams are taken delivery of care should be taken when introducing to older rams in the mob. Bring old rams into yards before delivery of new rams is taken. Put new and old rams together in a small pen with feed and water overnight to allow them to bond. Release all rams the following morning.
- All rams are vaccinated with 6 in 1. Ensure annual boosters are administered.

NOTE:

Fairbank is ovine brucellosis accredited free, OJD MN1V Status and are a 2nd generation approved vaccinated flock being vaccinated against OJD since 2003.

All ram LOTS are offered as flock rams, however should a transfer be required a minimum price of \$2500 will apply and nominated at the fall of the hammer.

DELIVERY

We would be happy to personally deliver within mainland Tasmania any rams not taken on the day. We thank you all for your interest in our sheep.

Chris, Megan, Frank and Cynthia Badcock

Lambplan has been used since its inception at Fairbank and whilst some selection criteria is placed on Lambplan ASBV's it is well known that we will not compromise structure or breed type to gain additional estimated breeding values. Lambplan is a guide to assist you in making decisions based on the genetic merit of each animal but should not replace visual selection. Balanced ASBV's are important for consistency of progeny but most importantly rams should be both fertile and structurally correct.

Bwt – Birth Weight. Rams with lower ASBV's for birth weight (BWT) produce lambs with lower birth weight. Both low (lamb survival) and high (lambing difficulties) should be avoided.

Wwt – Weaning Weight. Rams with a more positive ASBV for weaning weight (WWT) will, on average, produce lambs that grow quicker to weaning.

Pwwt – Post weaning weight. Rams with more positive ASBVs for post weaning weight (PWT) produce lambs that grow quicker and reach target weights in a shorter time.

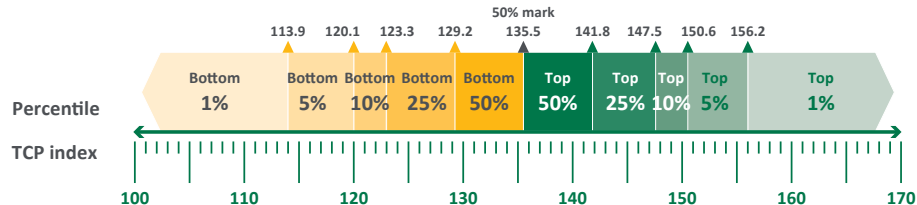
Pemd – Post eye muscle depth. Rams with a more positive ASBV for post weaning eye muscle depth produce lambs that have more muscle, independent of weight, and a higher lean meat yield.

Pfat – Post fat. Rams with a more negative ASBV for post weaning fat (PFAT) will produce lambs that are leaner at the same weight.

Carcase + is the most widely recognised index on Lambplan. It is a desired gains index promoting animals with high growth, high muscle and a smaller emphasis on fat. The index is based on the 1990 average of 100. Sheep Genetics have identified that by solely focusing on Carcase traits, it was having a negative impact on eating quality. Therefore Carcase+ will be phased out from 2020 and replaced with a new TCP (Terminal Carcase Production) Index which incorporates eating qualities and Carcase traits.

TCP The TCP Index has been created to assist producers to achieve both gains in their major production traits, such as post-weaning weight and muscling, as well as ensuring consumer satisfaction from lamb is maintained through focusing on key eating quality traits such as shear force (tenderness) and intramuscular fat (marbling).

The TCP Index, unlike Carcase Plus, is on a scale that is aligned with other Sheep Genetics' indexes and is represented in economic terms with a unity index reflecting an additional dollar per ewe joined per year. To assist in comparing rams, Sheep Genetics recommends using a percentile band table as reference. The figure below, which is based on the percentile band table, highlights the TCP Index value for significant percentiles for the 2018 drop animals.



TCP has been developed by using extensive research using mainly Poll Dorset and White Suffolk genetics. Therefore we believe this new index is not the most appropriate index for the Southdown and should not be used to compare between breeds. We are actively working with Sheep Genetics on a solution to find the most appropriate Southdown index but for 2019 we will show both indexes.

SOUTHDOWN RAMS



Southdowns have been a successful enterprise at Fairbank since 1922 spanning four generations, with both ram and ewe sales to all states during this time. This year's offering consists of progeny from our elite home bred sires that have been retained as they were the top sires of each drop. This year we have some outcross NZ sires that have proven results in both Australia and New Zealand.

This years Southdown offering include progeny of:

- **Fairbank 16/821** - Champion Bendigo 2018. Half Share sold to Chandpara Stud in Victoria. Lead sire for 2018 drop by our outcross NZ sire Mapua 14/106. 15 rams on offer by 16/821.
- **Kirkdale 16/206** - Reserve Champion Geelong 2018. Very long ram and out of an exceptional ewe. Another outcross sire for the stud. 6 rams on offer by Kirkdale 16/206 as well as breeding a keeper ram.
- **Chandpara 16/155** - Purchased for equal top price at Chandpara on property sale. This ram is very correct with great muscling and a proven pedigree. We used a pick up ram over two major AI programs and as a pick up over the natural joined ewes so he was used heavily in the flock. There are 20 rams on offer by 16/155.
- **Clifton Downs 14/279 (NZ)** - This NZ outcross was top price at Christchurch sale and is a shorter, thicker type. Used by AI and there are 6 rams on offer he also bred our keeper ram from the 2018 drop.

-
- **Fairbank 13/664** - A small AI program conducted to this ever reliable ram to produce 6 sale rams this year on top of 26 rams we have already sold by him in previous years.
 - **Fairbank 15/630** (*twin to 15/629*) - Top price of \$5,600 at 2016 sale. Used by AI and as a mating sire in our ET program. 630 is a beautifully balanced ram. 7 rams on offer by this elite sire.
 - **Fairbank 16/902** - Our keeper and lead sire for the 2018 drop however we sold him privately prior to joining so we used him over a small number of ewes in an AI program instead. A powerful long and correct ram who has also bred this years keeper ram ram (Reserve Interbreed Launceston). Just the 2 rams on offer.
 - **Clear Hills 13/341** - An elite outcross sire from one of the most established Southdown studs in Australia. He has bred clean, long faced rams. A small AI program conducted, so just the 4 rams on offer. Sire of one of our 2018 keeper rams.
 - **Fairbank 15/629** (*twin to 15/630*) - Second top price 2016 sale of \$5,000, sold to Gower Stud. Used by AI, he was Reserve Champion at Bendigo and one of the highest ASBV Southdown sires in the country. Sired a 2018 keeper ram. 4 rams on offer by 15/629.

70 FAIRBANK SOUTHDOWN RAMS

7

LOT	TAG	SIRE	Bwt	Wwt	Pwwt	Pemd	Pfat	Carcase +	TCP	\$	Purchaser
1	180888	F150630	0.34	7.4	11.5	0.6	0.0	165.0	114.1		
2	180939Tw	F160821	0.27	7.6	11.9	-0.2	-0.1	157.0	107.9		
3	180885	K160206	0.29	8.1	12.5	1.2	0.3	175.0	118.7		
4	180948Tw	F160821	0.39	8.0	12.6	0.0	-0.3	165.0	113.5		
5	180869Tw	F130664	0.30	8.5	12.4	0.1	0.3	163.0	106.3		
6	180995Tw	C160155	0.34	7.6	11.8	0.5	0.0	165.0	111.2		

TW - Twin

F - Fairbank

K - Kirkdale

CH - Clear Hills

CD - Clifton Downs

C - Chandpara

70 FAIRBANK SOUTHDOWN RAMS

8

LOT	TAG	SIRE	Bwt	Wwt	Pwwt	Pemd	Pfat	Carcase +	TCP	\$	Purchaser
7	180823	K160206	0.41	8.2	12.7	0.6	0.1	170.0	116.5		
8	180941Tw	F160821	0.25	6.9	10.3	0.2	-0.4	156.0	109.3		
9	180832	K160206	0.27	6.6	10.5	1.4	0.2	167.0	116.6		
10	180840Tw	K160206	0.54	8.7	13.9	1.3	0.3	182.0	123.8		
11	180864Tw	CH130341	0.35	7.8	11.3	0.4	0.7	159.0	107.5		
12	180913	CH130341	0.15	6.0	9.3	0.1	-0.2	148.0	106.6		

TW - Twin

F - Fairbank

K - Kirkdale

CH - Clear Hills

CD - Clifton Downs

C - Chandpara

70 FAIRBANK SOUTHDOWN RAMS

9

LOT	TAG	SIRE	Bwt	Wwt	Pwwt	Pemd	Pfat	Carcase +	TCP	\$	Purchaser
13	180978	C160155	0.26	7.7	11.6	0.7	0.5	165.0	111.4		
14	180824	K160206	0.35	7.9	11.6	0.2	-0.5	164.0	113.1		
15	180931Tw	C160155	0.17	6.2	10.2	1.6	1.0	164.0	111.7		
16	180854Tw	F150629	0.38	7.7	11.2	0.3	-0.4	162.0	109.0		
17	180894Tw	F150629	0.54	9.6	15.2	1.0	-0.4	188.0	123.8		
18	180895Tw	F150629	0.42	9.1	14.3	1.1	-0.5	185.0	122.1		

TW - Twin

F - Fairbank

K - Kirkdale

CH - Clear Hills

CD - Clifton Downs

C - Chandpara

70 FAIRBANK SOUTHDOWN RAMS

10

LOT	TAG	SIRE	Bwt	Wwt	Pwwt	Pemd	Pfat	Carcase +	TCP	\$	Purchaser
19	180909Tw	F160902	0.37	7.5	12.4	0.5	-1.1	171.0	117.9		
20	180912	CD140279	0.00	6.6	10.0	1.9	0.7	169.0	113.6		
21	180833	CD140279	0.14	7.4	11.7	0.7	-0.1	167.0	114.1		
22	180853Tw	CD140279	0.13	7.2	11.1	1.2	0.7	167.0	112.4		
23	180865Tw	CH130341	0.27	7.5	11.0	0.9	0.7	164	110.5		
24	180850Tw	F150630	0.38	8.6	13.1	-0.2	0.0	163	111.5		

TW - Twin

F - Fairbank

K - Kirkdale

CH - Clear Hills

CD - Clifton Downs

C - Chandpara

70 FAIRBANK SOUTHDOWN RAMS

11

LOT	TAG	SIRE	Bwt	Wwt	Pwwt	Pemd	Pfat	Carcase +	TCP	\$	Purchaser
25	180847Tw	F130664	0.43	8.4	12.1	0.0	0.4	160	106.1		
26	180882	CD140279	0.11	7.1	10.7	0.5	-0.2	160	110.8		
27	180910	F150630	0.35	7.9	12.0	0.7	0.3	167	115.4		
28	180892Tw	F150629	0.35	7.5	11.5	0.5	-0.8	167	114.4		
29	180996Tw	C160155	0.26	7.3	11.6	0.9	0.3	167	112.1		
30	181000Tw	C160155	0.16	7.0	11.0	1.4	0.8	167	112.6		

TW - Twin

F - Fairbank

K - Kirkdale

CH - Clear Hills

CD - Clifton Downs

C - Chandpara

70 FAIRBANK SOUTHDOWN RAMS

12

LOT	TAG	SIRE	Bwt	Wwt	Pwwt	Pemd	Pfat	Carcase +	TCP	\$	Purchaser
31	180935	C160155	0.29	7.6	11.7	0.8	0.7	165	111.3		
32	180972	C160155	0.22	6.7	10.1	1.2	0.4	162	112.2		
33	180848Tw	F130664	0.34	7.7	11.5	0.0	0.6	156	104.3		
34	180930Tw	C160155	0.13	6.9	9.9	0.5	0.2	155	104.7		
35	180971Tw	C160155	0.19	7.0	10.5	0.4	0.5	156	106.1		
36	180977Tw	F160821	0.2	6.7	10.2	0.3	-0.2	156	108.6		

TW - Twin

F - Fairbank

K - Kirkdale

CH - Clear Hills

CD - Clifton Downs

C - Chandpara

70 FAIRBANK SOUTHDOWN RAMS

13

LOT	TAG	SIRE	Bwt	Wwt	Pwwt	Pemd	Pfat	Carcase +	TCP	\$	Purchaser
37	180973	C160155	0.2	6.0	9.1	0.6	0.4	151	105.3		
38	180886Tw	CD140279	0.17	6.6	9.4	-0.2	-0.6	148	105.3		
39	181006Tw	C160155	0.15	5.7	8.4	0.6	0.5	148	103.4		
40	180982Tw	F160821	0.18	6.4	9.0	-0.2	-0.5	146	103.1		
41	180916Tw	F150630	0.3	7.0	9.3	-0.6	-0.6	144	101.3		
42	180946Tw	F160821	0.22	5.5	8.0	-0.3	-0.3	138	100		

TW - Twin

F - Fairbank

K - Kirkdale

CH - Clear Hills

CD - Clifton Downs

C - Chandpara

70 FAIRBANK SOUTHDOWN RAMS

14

LOT	TAG	SIRE	Bwt	Wwt	Pwwt	Pemd	Pfat	Carcase +	TCP	\$	Purchaser
43	180908Tw	F160902	0.41	7.7	12.6	0.4	-1.0	170	116.7		
44	180860	F150630	0.32	8.1	12.0	0.3	-0.4	166	113.6		
45	180902Tw	K160206	0.22	6.4	9.9	1.7	0.6	166	114.8		
46	180963Tw	C160155	0.22	7.0	11.1	1.2	1.0	165	111.7		
47	180896	CH130341	0.28	7.8	11.3	0.6	0.0	165	112.6		
48	180897Tw	F150630	0.33	8.6	12.2	0.2	0.2	164.0	109.8		

TW - Twin

F - Fairbank

K - Kirkdale

CH - Clear Hills

CD - Clifton Downs

C - Chandpara

70 FAIRBANK SOUTHDOWN RAMS

15

LOT	TAG	SIRE	Bwt	Wwt	Pwwt	Pemd	Pfat	Carcase +	TCP	\$	Purchaser
49	180933Tw	C160155	0.35	7.8	11.8	0.5	0.4	164	110.9		
50	180868Tw	F130664	0.32	8.8	12.2	-0.1	-0.3	163	106.5		
51	180838	CD140279	0.04	6.2	9.4	1.5	0.7	161	110		
52	180970Tw	C160155	0.26	7.3	11.1	0.3	0.4	158	107.5		
53	180979	F160821	0.24	6.6	10.0	0.0	-0.2	151	106.5		
54	180962Tw	C160155	0.12	5.3	8.0	0.7	0.9	145.0	101.3		

TW - Twin

F - Fairbank

K - Kirkdale

CH - Clear Hills

CD - Clifton Downs

C - Chandpara

70 FAIRBANK SOUTHDOWN RAMS

16

LOT	TAG	SIRE	Bwt	Wwt	Pwwt	Pemd	Pfat	Carcase +	TCP	\$	Purchaser
55	180968Tw	C160155	0.31	6.2	9.4	-0.3	0.1	143	102		
56	180958Tw	F160821	0.25	6.0	8.9	-0.6	-0.2	139.0	100.1		
57	180898Tw	F150630	0.31	8.4	12.1	0.4	0.3	165	110.4		
58	181002Tw	C160155	0.25	7.8	11.5	0.8	0.6	164.0	109.0		
59	180870	F130664	0.3	7.8	10.7	0.1	0.0	156	104.4		
60	181010Tw	C160155	0.15	5.8	9.1	1.0	0.5	155.0	108.2		

TW - Twin

F - Fairbank

K - Kirkdale

CH - Clear Hills

CD - Clifton Downs

C - Chandpara

70 FAIRBANK SOUTHDOWN RAMS

17

LOT	TAG	SIRE	Bwt	Wwt	Pwwt	Pemd	Pfat	Carcase +	TCP	\$	Purchaser
61	181009Tw	C160155	0.15	5.6	8.5	1.2	0.6	154	107.4		
62	180884	F130664	0.16	6.5	9.9	0.2	-0.1	152.0	106.9		
63	181007Tw	C160155	0.09	5.2	7.8	0.7	0.5	145	102.4		
64	180960	F160821	0.22	5.1	8.2	0.1	-0.4	143.0	105.9		
65	180976Tw	F160821	0.28	6.0	9.2	-0.4	-0.5	144	103.9		
66	180990T	F160821	0.13	5.2	8.3	0.1	0.5	140.0	100.7		

TW - Twin

F - Fairbank

K - Kirkdale

CH - Clear Hills

CD - Clifton Downs

C - Chandpara

70 FAIRBANK SOUTHDOWN RAMS

18

LOT	TAG	SIRE	Bwt	Wwt	Pwwt	Pemd	Pfat	Carcase +	TCP	\$	Purchaser
67	180942Tw	F160821	0.22	6.0	8.4	-0.8	-0.7	138	99.7		
68	180992Tw	F160821	0.25	5.2	7.6	-0.3	-0.6	138.0	100.9		
69	180985Tw	F160821	0.21	5.5	7.6	-1.1	-0.1	128	93.3		
70	180986Tw	F160821	0.31	5.5	6.9	-1.7	-0.6	120	90.1		

TW - Twin

F - Fairbank

K - Kirkdale

CH - Clear Hills

CD - Clifton Downs

C - Chandpara

FIRST CROSS



13 FAIRBANK SOUTHDOWN X POLL DORSET FIRST CROSS RAMS

20

In an attempt to tighten the gestation length on our pure stud lines we have for the past six seasons utilised a Southdown ram to pick up both Poll Dorset and White Suffolk ewes after the pure bred mating period has been completed. As a result some of these rams are not born until late September. We also use a selected number of ewes to be specifically placed in the first cross program.

LOT	TAG	SIRE	Bwt	Wwt	Pwwt	Pemd	Pfat	Carcase +	TCP	\$	Purchaser
71	180098	C160155	0.22	7.5	11.4	2.4	0.9	181.0	125.9		
72	180221Tw	F160902	0.54	7.7	12.4	0.9	-1.1	177.0	124.7		
73	180461Tw	F160821	0.30	7.1	9.7	0.8	-0.9	163.0	117.1		
74	180350Tw	C160155	0.29	6.8	10.0	0.6	0.3	157.0	111.0		

Tw - Twin

F - Fairbank

C - Chandpara

13 FAIRBANK SOUTHDOWN X POLL DORSET FIRST CROSS RAMS

21

LOT	TAG	SIRE	Bwt	Wwt	Pwwt	Pemd	Pfat	Carcase +	TCP	\$	Purchaser
75	180483	F160821	0.11	5.5	8.1	1.3	-0.4	157.0	115.2		
76	180473Tw	F160821	0.49	7.2	10.4	-0.1	-0.4	154.0	110.3		
77	180201Tw	F160902	0.31	7.3	11.4	2.4	-0.8	184.0	129.7		
78	180072Tw	F160902	0.36	7.0	11.4	1.8	-0.7	180.0	127.3		
79	180432Tw	F160902	0.23	5.7	8.3	1.4	0.6	156.0	111.7		
80	180195Tw	C160155	0.30	6.3	9.7	0.8	0.4	156.0	111.6		

Tw - Twin

F - Fairbank

C - Chandpara

13 FAIRBANK SOUTHDOWN X POLL DORSET FIRST CROSS RAMS

LOT	TAG	SIRE	Bwt	Wwt	Pwwt	Pemd	Pfat	Carcase +	TCP	\$	Purchaser
81	180485Tw	F160821	0.28	6.3	9.1	0.4	-0.7	154.0	114.3		
82	180466Tw	F160821	0.10	5.5	8.0	1.0	-0.4	153.0	113.9		
83	180465Tw	F160821	0.17	5.5	7.8	0.9	-0.3	151.0	112.5		

Tw - Twin F - Fairbank C - Chandpara

WHITE SUFFOLK



Our White Suffolks commenced in 1996 using Fairbank Poll Dorset ewes and the proven South Australian White Suffolk genetics. Since then carefully selected mainland and Tasmanian sires have been utilised to produce structurally correct and well muscled rams suited to a wide range of conditions and locations. Our White Suffolk's are very consistent and express great breed type, structural correctness and muscling

This years White Suffolk offering include progeny of:

- **Detpa Grove 16/370** - We saw this ram on property and were impressed with his balance and structural correctness and pedigree. He was used heavily in the 2018 drop and has 15 rams on offer.
- **Days 16/213** - Purchased for \$6,000 at the successful Day family on property sale in South Australia. A very moderate ram with a heavy hind quarter. His twin brother was retained in the Day flock. We have retained a son for breeding purposes and will have 10 Rams on offer by Days 16/213.
- **Fairbank 16/549** - Our best son by Gemini 12/006. Structurally very correct with lots of length. He has bred a magnificent keeper ram this year and will have 11 rams catalogued for sale.
- **Gemini 12/006** - By Bundara Downs 7626/09. The keeper ram from Gemini which we purchased privately in 2015. He is a widely used sire with over 800 recorded progeny in 9 flocks around Australia. 6 is a very balanced ram and has exceptional Lambplan ASBVs. 4 rams on offer by G12/006.

40 FAIRBANK WHITE SUFFOLK RAMS

LOT	TAG	SIRE	Bwt	Wwt	Pwwt	Pfat	Pemd	Carcase +	TCP	\$	Purchaser
84	180672Tr	DG160370	0.46	9.8	15.5	2.0	-0.5	202.0	143.9		
85	180596Tw	DG160370	0.48	10.0	15.3	1.9	-0.3	200.0	141.8		
86	180750Tw	DG160370	0.31	8.8	13.9	2.1	-0.4	194.0	140.0		
87	180581	F160549	0.44	9.8	14.7	1.7	0.3	192.0	133.7		
88	180664	F160549	0.34	9.1	13.7	1.4	-0.5	187.0	135.3		
89	180724Tw	F160549	0.43	9.2	13.6	0.9	-0.6	182.0	133.6		

Tw - Twin

Tr - Triplet

F - Fairbank

G - Gemini

DG - Detpa Grove

D - Days Whiteface

40 FAIRBANK WHITE SUFFOLK RAMS

26

LOT	TAG	SIRE	Bwt	Wwt	Pwwt	Pfat	Pemd	Carcase +	TCP	\$	Purchaser
90	180629Tw	DG160370	0.50	11.6	17.8	1.8	-0.6	213.0	148.1		
91	180605Tw	D160213	0.40	8.7	13.7	3.1	0.4	202.0	146.0		
92	180627Tw	G120006	0.41	10.8	16.1	1.7	-0.2	202.0	146.2		
93	180666Tw	DG160370	0.44	9.7	14.5	2.0	-0.5	198.0	139.2		
94	180692Tw	DG160370	0.42	9.1	14.2	2.1	-0.6	197.0	141.6		
95	180626	DG160370	0.36	9.9	14.9	1.7	-0.3	196.0	138.2		

Tw - Twin

Tr - Triplet

F - Fairbank

G - Gemini

DG - Detpa Grove

D - Days Whiteface

40 FAIRBANK WHITE SUFFOLK RAMS

27

LOT	TAG	SIRE	Bwt	Wwt	Pwwt	Pfat	Pemd	Carcase +	TCP	\$	Purchaser
96	180579Tw	DG160370	0.41	8.8	12.7	1.7	-0.5	185.0	134.7		
97	180576	F160549	0.38	9.4	13.9	1.2	0.1	184.0	132.5		
98	180813	DG160370	0.38	8.4	12.4	1.4	-0.6	182.0	132.1		
99	180789Tr	D160213	0.41	7.2	11.0	2.1	0.0	180.0	131.0		
100	180642Tw	G120006	0.25	8.9	13.6	2.8	0.6	197.0	142.7		
101	180658Tr	DG160370	0.39	9.4	14.7	2.0	-0.3	198.0	141.1		

Tw - Twin

Tr - Triplet

F - Fairbank

G - Gemini

DG - Detpa Grove

D - Days Whiteface

40 FAIRBANK WHITE SUFFOLK RAMS

28

LOT	TAG	SIRE	Bwt	Wwt	Pwwt	Pfat	Pemd	Carcase +	TCP	\$	Purchaser
102	180742Tw	DG160370	0.36	9.2	14.6	2.2	0.1	197.0	138.8		
103	180646Tr	G120006	0.37	9.7	15.3	2.0	0.4	197.0	141.5		
104	180587Tr	F160549	0.4	10.0	15.4	1.5	-0.1	195	137.9		
105	180653	D160213	0.32	8.3	12.7	2.4	0.3	189	138.6		
106	180693Tw	DG160370	0.32	8.0	12.6	2.2	-0.3	189.0	137.8		
107	180766Tw	D160213	0.32	6.8	10.8	2.8	0.2	185	137		

Tw - Twin

Tr - Triplet

F - Fairbank

G - Gemini

DG - Detpa Grove

D - Days Whiteface

40 FAIRBANK WHITE SUFFOLK RAMS

29

LOT	TAG	SIRE	Bwt	Wwt	Pwwt	Pfat	Pemd	Carcase +	TCP	\$	Purchaser
108	180778Tw	F160549	0.42	9.6	14.6	0.9	-0.4	185.0	135.0		
109	180763	D160213	0.4	7.1	10.6	2.3	0.1	179	130.7		
110	180606Tw	D160213	0.38	8.7	13.2	2.7	0.0	198	143.6		
111	180792Tw	DG160370	0.32	8.2	12.8	2.3	-0.1	191	137.2		
112	180814Tw	G120006	0.3	9.1	13.8	1.8	0.2	190	139.4		
113	180667Tw	D160213	0.38	7.7	12.0	2.3	0.3	185	136.1		

Tw - Twin

Tr - Triplet

F - Fairbank

G - Gemini

DG - Detpa Grove

D - Days Whiteface

40 FAIRBANK WHITE SUFFOLK RAMS

30

LOT	TAG	SIRE	Bwt	Wwt	Pwwt	Pfat	Pemd	Carcase +	TCP	\$	Purchaser
114	180780Tw	D160213	0.29	6.9	11.2	2.5	0.3	183	134.5		
115	180781Tw	D160213	0.43	7.8	12.1	1.5	-0.2	179	133.2		
116	180749Tw	DG160370	0.47	9.2	14.0	2.0	-0.5	196.0	140.9		
117	180593Tw	F160549	0.20	8.8	14.4	2.1	0.1	194	143.3		
118	180811Tr	DG160370	0.36	9.4	14.4	2.0	0.4	194	136.1		
119	180662Tr	F160549	0.24	9.3	14.2	1.7	-0.5	192	138.9		

Tw - Twin

Tr - Triplet

F - Fairbank

G - Gemini

DG - Detpa Grove

D - Days Whiteface

40 FAIRBANK WHITE SUFFOLK RAMS

31

LOT	TAG	SIRE	Bwt	Wwt	Pwwt	Pfat	Pemd	Carcase +	TCP	\$	Purchaser
120	180638Tw	F160549	0.31	9.0	13.8	1.1	-0.1	182	135.7		
121	180740Tw	F160549	0.33	8.9	13.5	1.0	-0.3	181	131.4		
122	180755Tw	F160549	0.38	7.7	12.0	1.4	-0.4	178	134		
123	180767Tw	D160213	0.26	6.3	9.9	2.2	-0.2	176	132.9		

Tw - Twin

Tr - Triplet

F - Fairbank

G - Gemini

DG - Detpa Grove

D - Days Whiteface

POLL DORSET



Celebrating 50 Years of Breeding

Our Poll Dorsets were established in 1969 by selecting the top ewes from leading Tasmanian studs. Since then we have carefully selected the best available genetics by either natural mating or A.I as well as our own top rams to produce commercially relevant industry sires.

- **LambPro 14/859** - Fairbank was fortunate to privately purchase this industry leading sire. 859 boasts an eye muscle EMD of 4.1 and a TCP index of 161.8. He is a trait leader for Pemd, eating quality traits such as dressing %, Lean meat yield and shear force and the new TCP index which ranks him in the top 25 Poll Dorset sires in Australia. Progeny are consistent with another 13 rams on offer this year as well a ram set aside to retain in the stud.
- **Melton Vale 13/291Tr** - A triplet son by Ulandi Park 54. Purchased in 2014 and used extensively now in 3 studs. This ram is very correct and displays very good muscling. He has not missed a beat since we purchased him. He has very good balanced ASBVs. 13 rams on offer.
- **Fairbank 13/185** - By Fairbank 08/060 who was used extensively in the stud for six years. 185 is very correct, with good length and bone. 7 rams on offer by 185.
- **Derrynock 14/033** - An AI sire used due to his exception breeding. He has been the lead sire for many mainland studs. Progeny have very good growth and balance. Sire of our keeper ram. 7 Rams on offer.

-
- **Fairbank 16/433** - A son of the influential Lambpro 859. Very correct with added length. Limited opportunity as we were still using his sire so just the 2 rams on offer.
 - **Ivadene 14/089** - We have watched progeny of this high growth ram (231 Carcase +) perform over the years and have been impressed with their consistency and correctness. We used a son as a ram lamb over our AI pickup ewes. Just the 3 rams from a small AI program.
 - **Derrynock 11/131** - Has performed consistently well for the Allendale flock in South Australia and regularly breeds the top ewes and rams each year. We valued this contribution that a ram can make and look forward to seeing how his daughters perform. We have 4 sons on offer this year.
 - **Bruan 11/292** - I saw progeny of this ram in Victoria several years ago and liked their correctness, style and sire outlook. When the opportunity arose to purchase the last of the semen I grabbed it. A pretty good strike rate with all 5 rams born making the sale.

58 FAIRBANK POLL DORSET RAMS

35

LOT	TAG	SIRE	Bwt	Wwt	Pwwt	Pfat	Pemd	Carcase +	TCP	\$	Purchaser
124	180041	LP140859	0.49	10.7	16.0	3.1	-0.5	218.0	145.6		
125	180114	1140089	0.50	11.0	16.8	2.6	-0.7	217.0	144.9		
126	180074	D140033	0.40	8.7	14.7	2.2	-0.7	200.0	139.2		
127	180167	F130185	0.41	9.0	13.7	2.2	-0.3	195.0	135.0		
128	180380	D140033	0.57	9.1	13.2	2.0	-0.9	194.0	137.5		
129	180428	MV130291	0.30	9.6	13.8	1.5	-0.8	191.0	131.6		

Tw - Twin

Tr - Triplet

F - Fairbank

MV - Melton Vale

LP - Lambpro

D - Derrynock

I - Ivadene

B - Bruan

58 FAIRBANK POLL DORSET RAMS

36

LOT	TAG	SIRE	Bwt	Wwt	Pwwt	Pfat	Pemd	Carcase +	TCP	\$	Purchaser
130	180152	D140033	0.48	10.6	16.3	3.0	-0.5	218.0	148.0		
131	180087Tw	B110292	0.44	8.9	15.2	3.2	-0.3	211.0	145.3		
132	180021	B110292	0.44	9.4	15.2	2.1	-0.9	203.0	137.3		
133	180433Tw	MV130291	0.22	8.4	12.7	3.2	-0.7	203.0	141.2		
134	180155Tw	F130185	0.30	9.3	14.0	2.4	-0.3	198.0	136.1		
135	180454Tw	MV130291	0.23	9.1	13.5	2.2	-1.1	198.0	138.8		

Tw - Twin

Tr - Triplet

F - Fairbank

MV - Melton Vale

LP - Lambpro

D - Derrynock

I - Ivadene

B - Bruan

58 FAIRBANK POLL DORSET RAMS

37

LOT	TAG	SIRE	Bwt	Wwt	Pwwt	Pfat	Pemd	Carcase +	TCP	\$	Purchaser
136	180159	LP140859	0.39	8.9	12.5	2.5	-0.9	197.0	142.5		
137	180338Tw	D140033	0.65	11.3	16.0	0.8	-1.4	196.0	136.6		
138	180449Tw	MV130291	0.31	8.5	12.2	2.0	-0.9	189.0	133.5		
139	180268	D110131	0.47	7.6	11.6	2.2	-0.4	185.0	130.4		
140	180027	I140089	0.54	10.8	16.0	3.2	-0.5	219.0	145.4		
141	180039	LP160329	0.39	9.4	13.6	3.6	-0.4	212.0	146.8		

Tw - Twin

Tr - Triplet

F - Fairbank

MV - Melton Vale

LP - Lambpro

D - Derrynock

I - Ivadene

B - Bruan

58 FAIRBANK POLL DORSET RAMS

38

LOT	TAG	SIRE	Bwt	Wwt	Pwwt	Pfat	Pemd	Carcase +	TCP	\$	Purchaser
142	180260Tw	LP160329	0.37	9.2	13.5	2.8	-0.9	205.0	144.8		
143	180439Tw	MV130291	0.23	8.3	11.9	3.5	-0.3	202.0	140.6		
144	180165	F160433	0.47	9.7	13.7	2.4	-0.8	201	142.6		
145	180313Tw	F130185	0.41	9.8	14.9	1.9	-0.4	199	135.7		
146	180326Tw	LP140859	0.39	9.4	13.5	2.2	-0.7	197	141.5		
147	180443Tw	MV130291	0.22	8.2	12.6	2.9	0.1	196	135.6		

Tw - Twin

Tr - Triplet

F - Fairbank

MV - Melton Vale

LP - Lambpro

D - Derrynock

I - Ivadene

B - Bruan

58 FAIRBANK POLL DORSET RAMS

39

LOT	TAG	SIRE	Bwt	Wwt	Pwwt	Pfat	Pemd	Carcase +	TCP	\$	Purchaser
148	180303Tw	F130185	0.31	8.5	13.6	2.5	0.5	195	133.7		
149	180112Tw	LP1030	0.48	9.3	13.6	1.5	-0.8	189.0	139.8		
150	180441Tw	MV130291	0.32	8.6	12.7	1.8	-0.7	188	132.4		
151	180292	D110131	0.44	8.3	13.0	1.8	-0.5	187	131		
152	180269Tw	D140033	0.5	9.2	13.7	3.2	0.0	207.0	141.5		
153	180409Tw	LP140859	0.5	9.7	14.8	2.3	-0.8	204	148.4		

Tw - Twin

Tr - Triplet

F - Fairbank

MV - Melton Vale

LP - Lambpro

D - Derrynock

I - Ivadene

B - Bruan

58 FAIRBANK POLL DORSET RAMS

40

LOT	TAG	SIRE	Bwt	Wwt	Pwwt	Pfat	Pemd	Carcase +	TCP	\$	Purchaser
154	180500Tw	MV130291	0.18	8.9	13.6	3.0	-0.4	204	139.2		
155	180050Tw	D110131	0.50	9.1	14.7	2.5	0.1	201	137.4		
156	180080Tw	LP160329	0.33	8.3	12.3	3.0	-0.7	200	142.9		
157	180249	F130185	0.34	8.9	13.2	2.8	-0.1	199	139.5		
158	180383Tw	LP140859	0.43	8.7	13.1	2.5	-0.8	197	143.4		
159	180447Tw	MV130291	0.33	10.1	14.6	1.7	-0.9	197	134.7		

Tw - Twin

Tr - Triplet

F - Fairbank

MV - Melton Vale

LP - Lambpro

D - Derrynock

I - Ivadene

B - Bruan

58 FAIRBANK POLL DORSET RAMS

41

LOT	TAG	SIRE	Bwt	Wwt	Pwwt	Pfat	Pemd	Carcase +	TCP	\$	Purchaser
160	180455Tw	MV130291	0.23	9.0	13.2	2.2	-1.1	197	138.1		
161	180285	D140033	0.45	7.9	12.1	2.3	-0.7	190	136.6		
162	180095	B110292	0.39	8.6	14.8	2.9	-0.5	207	143		
163	180252	LP140859	0.37	10.0	15.3	2.4	-0.5	206	146.2		
164	180419Tw	LP140859	0.27	8.8	13.1	3.0	-0.6	202	146.2		
165	180164	D140033	0.34	8.4	13.1	3.0	-0.1	201	138.2		

Tw - Twin

Tr - Triplet

F - Fairbank

MV - Melton Vale

LP - Lambpro

D - Derrynock

I - Ivadene

B - Bruan

58 FAIRBANK POLL DORSET RAMS

42

LOT	TAG	SIRE	Bwt	Wwt	Pwwt	Pfat	Pemd	Carcase +	TCP	\$	Purchaser
166	180405Tw	F130185	0.39	9.0	13.5	2.7	-0.2	199	140.5		
167	180019Tw	B110292	0.44	9.1	15.1	1.8	-0.7	197	133.5		
168	180417	LP140859	0.35	9.1	13.6	2.1	-0.9	197	142.3		
169	180429Tw	MV130291	0.17	7.9	12.6	2.8	-0.1	195	135.5		
170	180290Tw	D110131	0.46	7.6	11.6	1.8	-0.3	180	127.5		
171	180187Tw	F160433	0.5	8.2	11.9	0.7	-1.1	174	130.2		

Tw - Twin

Tr - Triplet

F - Fairbank

MV - Melton Vale

LP - Lambpro

D - Derrynock

I - Ivadene

B - Bruan

58 FAIRBANK POLL DORSET RAMS

43

LOT	TAG	SIRE	Bwt	Wwt	Pwwt	Pfat	Pemd	Carcase +	TCP	\$	Purchaser
172	180086Tw	B110292	0.45	8.2	14.1	3.0	-0.3	203	141.7		
173	180096Tw	LP140859	0.41	9.6	14.4	2.5	-0.1	202	143.4		
174	180237Tw	LP140859	0.41	9.1	14.1	2.6	-0.3	202	145.1		
175	180276Tw	LP140859	0.41	9.3	14.3	2.2	-0.7	200	144.9		
176	180323	MV130291	0.23	8.5	12.7	2.7	-0.7	198	137		
177	180177Tw	LP140859	0.41	8.9	13.8	2.2	-0.7	197	143.1		

Tw - Twin

Tr - Triplet

F - Fairbank

MV - Melton Vale

LP - Lambpro

D - Derrynock

I - Ivadene

B - Bruan

58 FAIRBANK POLL DORSET RAMS

44

LOT	TAG	SIRE	Bwt	Wwt	Pwwt	Pfat	Pemd	Carcase +	TCP	\$	Purchaser
178	180340	MV130291	0.11	9.1	13.7	2.2	-0.2	196	133.4		
179	180382Tw	LP140859	0.30	7.8	11.3	3.1	-0.3	195	142.1		
180	180368Tr	F130185	0.42	8.7	13.5	2.1	-0.4	193	137.7		
181	180293Tw	I140089	0.40	8.6	13.1	2.1	-0.5	192	132.9		

Tw - Twin

Tr - Triplet

F - Fairbank

MV - Melton Vale

LP - Lambpro

D - Derrynock

I - Ivadene

B - Bruan

NOTES

2019 Fairbank Ram Sale

BUYER'S INSTRUCTION SLIP

Trading Name:

Contact Name:

Postal Address:

.....Post Code

Phone:

Agent's Name:

Lots Purchased

Lot	Price	Lot	Price

Delivery Instructions:

.....

Transfer: Y / N

Insurance: Y / N 30 days 3 months

6 months 12 months

Transit

Expected Delivery Date:

Carrier:

Buyers Signature:

Payment Due 30th November 2019.

No verbal instructions can be accepted.



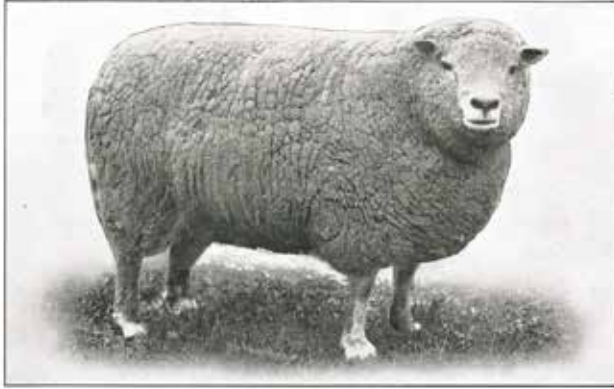
Fairbank 18/837

Reserve Interbreed Champion Ram,
Launceston Royal 2019



Fairbank 18/033

Champion Poll Dorset Ram,
Launceston Royal 2019

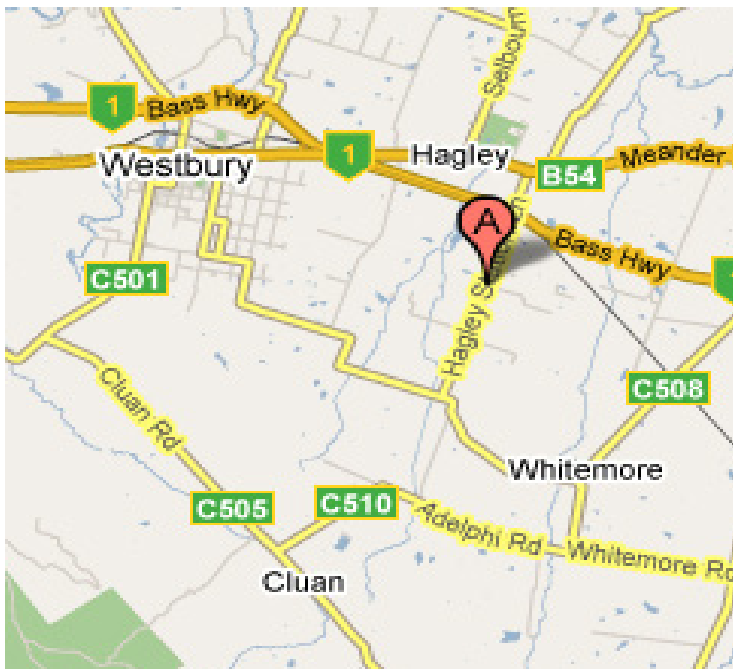


Fairbank “PETER”
Champion Southdown Ram,
Melbourne Royal Show, 1926.

Fairbank 16/821
Champion Southdown Ram,
Aust. Sheep & Wool Show, 2018



After over 90 years and 5 generations, breeding quality sheep still remains our focus!



174 Hagley Station Lane, Hagley, TAS

From the North West - Take Hagley exit, first left past the poppy factory, travel through Hagley, past school to roundabout. Turn right into Station Lane, (C507), Fairbank is approximately 2.5kms on right.

From Northern Midlands - Travel on Bass Highway, take Hagley exit, turn left at top of ramp (C507) over the railway line, Fairbank is 1.74kms on right.